

LINE	LENGTH	BEARING	LINE	LENGTH	BEARING
L1	11.74	S0017.200W	L23	15.81	S88.47.30E
L2	11.74	S0017.200W	L24	15.81	S88.47.30E
L3	24.40	N89.47.30W	L25	27.15	S88.47.30E
L4	28.87	N89.47.30W	L26	3.84	S85.56.45W
L5	13.59	N89.47.30W	L27	7.06	S85.56.45W
L6	14.33	S89.47.30E	L28	29.36	S85.56.45W
L7	14.33	S89.47.30E	L29	6.51	S89.47.30E
L8	15.00	S0017.200W	L30	6.51	N87.49.27W
L9	6.00	N88.47.30W	L31	13.31	N87.49.27W
L10	27.34	N89.47.30W	L32	13.87	S77.26.12E
L11	5.98	N89.47.30W	L33	6.42	S0013.42E
L12	27.34	N89.47.30W	L34	7.86	S0013.42E
L13	5.98	N89.47.30W	L35	13.31	S83.50.34E
L14	15.00	N89.47.30W	L36	10.86	N44.02.28E
L15	15.00	N89.47.30W	L37	5.00	S89.47.30W
L16	22.87	S0017.200W	L38	5.00	S89.47.30W
L17	27.33	S0017.200W	L39	21.14	S81.12.25W
L18	15.00	S89.47.30E	L40	21.07	S81.12.25W
L19	12.71	S0017.200W	L41	20.46	S153.02.00E
L20	14.72	S77.26.12E	L42	22.05	S77.26.12E
L21	14.72	S77.26.12E	L43	22.05	S77.26.12E
L22	23.58	N72.32.30W	L44	22.44	N78.47.18E

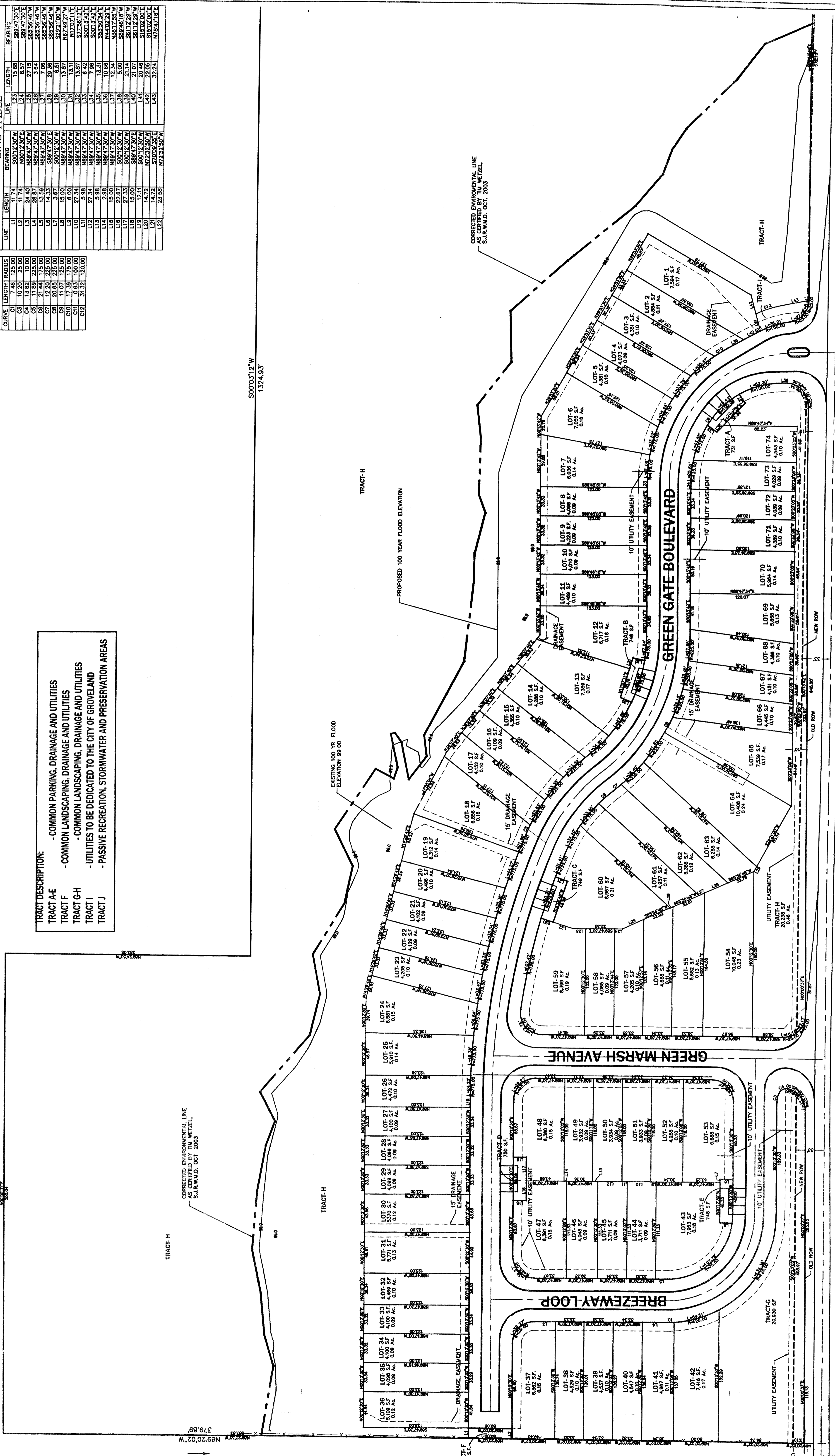
CURVE	LENGTH	BEARING
C1	10.20	S12.00
C2	13.82	S10.00
C3	11.89	S225.00
C4	21.44	S75.00
C5	26.40	S225.00
C6	11.07	S125.00
C7	17.39	S125.00
C8	0.63	S100.00
C9	31.39	S120.00

S00'03'12"W
1324.93'

TRACT DESCRIPTION:
 - COMMON PARKING, DRAINAGE AND UTILITIES
 - COMMON LANDSCAPING, DRAINAGE AND UTILITIES
 - UTILITIES TO BE DEDICATED TO THE CITY OF GROVELAND
 - PASSIVE RECREATION, STORMWATER AND PRESERVATION AREAS

CORRECTED ENVIRONMENTAL LINE
AS CERTIFIED BY TIM WETZEL
SURV.M.A.D. OCT. 2003

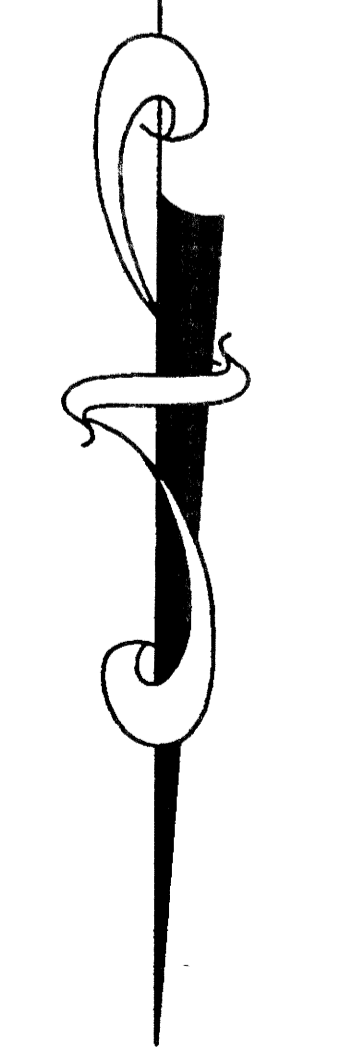
CORRECTED ENVIRONMENTAL LINE
AS CERTIFIED BY TIM WETZEL
SURV.M.A.D. OCT. 2003



MAX HOOKS ROAD

REVISION	DATE
1	7/2/03
2	7/2/04
3	7/23/04
4	8/23/04
5	3/31/05
6	APRIL 05

ORIGINAL PLOT
 REVISED LAYOUT PER REVISED METLANDS LINE
 ADDED R/W TO 33' FROM CL PER LAKE CO PUBLIC WORKS. RELOT
 REVISED SIDEWALK TO INSIDE R/W. REV. LOTS 65-74. RELOT
 ADD TEXT FOR EASEMENTS. RELOT
 REUSE LOT LINES TO FIT NEW CONDOS. RELOT



XE WALLING ENGINEERING
 SITES PLANS - PERMITTING
 CONSULTING - PLANNING
 H. BENNETT WALLING, P.E., REG. #42787
 KEVIN L. ATCHLEY, P.E., REG. #3119
 CERTIFICATE NO. EB-0006635

PRELIMINARY PLAT FOR:
 THE VILLAS AT GREEN GATE
 MAX HOOKS ROAD
 GROVELAND, FLORIDA

C-2

DRAWN: H.B.W.
 CHECKED: H.B.W.
 DATE: OCT. 02
 SCALE: 1" = 60'
 1" = 60'
 01-20